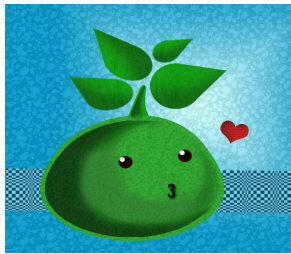


## Join the Exhibit!

### WHAT TO EXHIBIT?

Information, education and communication (IEC) materials; prototype technologies; diorama or any display of any or combination of the following—

- ◆ Community-based food production technology
- ◆ Climate change mitigation and adaptation responses and technologies (e.g. early-warning systems, disaster risk reduction and management, renewable energy systems)
- ◆ Other community responses and activities



### HOW TO PARTICIPATE?

E-mail the organizers at [info@agham.org](mailto:info@agham.org) of your intention to participate. Just tell us the following information:

- ◆ Organization's name
- ◆ Materials for exhibition
- ◆ Materials for sale and/or distribution
- ◆ Space requirement of your exhibit

### SCHEDULE OF THE EXHIBIT

Opening of the Exhibit

- ◆ July 5, 2011 at 8:30 AM
- ◆ Bahay ng Alumni, University of the Philippines Diliman

Exhibit Run

- ◆ July 5-6, 2011
- ◆ 8:30AM—6:00PM
- ◆ Bahay ng Alumni, University of the Philippines Diliman

### EXHIBIT Secretariat

Business Address: 26 Matulungin St. Central District,  
Quezon City 1100 Philippines  
Telefax: +63.2. 9209099  
Mobile: +63 917 8490850  
Email: [info@agham.org](mailto:info@agham.org)

## Understanding and Addressing Climate Change: An Exhibit of Education and Climate Change Responses of Grassroots Movements and Communities

July 5-6, 2011  
Bahay ng Alumni,  
University of the  
Philippines Diliman,  
Quezon City  
Philippines



**AGHAM**  
Advocates of Science and  
Technology for the People



**PACC**  
PEOPLE'S ACTION ON CLIMATE CHANGE



**CLIMATE**  
Asia Pacific

## UNDERSTANDING AND ADDRESSING CLIMATE CHANGE:

### An Exhibit of Education and Climate Change Responses of Grassroots Movements and Communities

#### Climate Change and the World's Poor People

Asia is the largest and most populous continent in the world, covering 29.4% of the Earth's total land area and serving as home to almost 4 billion people. It also houses one of the most destitute countries in the world where majority of the population live in abject poverty. In 2001, there were 767 million people in Asia's two regions who live on less than \$1 a day. The region of Southeast Asia (SEA), according to the World Bank, "accounts for approximately half of the world are poor."

Among the environmental concerns that are beginning to adversely impact the most on Asian countries is climate change. Global warming and the inter-related impacts that it brings about will take a heavy toll on the lives and livelihoods of poor peoples, already reeling from impacts of neo-liberal policies in the region.

#### Rationale of the Exhibit

In many Asian developing countries, a significant portion of the population live in low-lying areas or in dangerous hilly terrains which are most critical to the impacts of climate change, such as flooding, land-slides, and super typhoons.

These are also the same areas where the poor sectors peasants, rural women, indigenous peoples, fisher folk and urban poor have the least access to support, technology, basic social services, and material and financial recourses to cope and adapt to these changes. With barely any means to cope with this situation, the grassroots people of the region become the most vulnerable communities to various impacts of global warming, which is further contributing to the cycle of poverty.

However, communities most affected are continuing to counter these impacts. Thus, the exhibit which will showcase community initiatives and best practices and coping mechanisms will be featured in the International Festival of People's Rights and Struggles (IFPRS) on July 5-6, 2011.

#### Aims and Objectives

The exhibit shall be a national and regional grassroots venue to showcase the communities' initiatives for exchange and expression of local climate change issues and coping mechanisms, calls and actions towards asserting their right to access and conserve the Earth's resources, while protecting and advancing their welfare over the global environmental and economic crisis.

The exhibit aims to contribute to global efforts to bring about climate justice by bringing forward and highlighting Asian and Philippine grassroots situation and calls on the challenges posed by impacts of climate change.

The exhibit shall feature Climate Change education materials and appropriate Climate Change mitigation and adaptation mechanisms and technologies.

